



BIO COMPOSANTS
MÉDICAUX

Fast Splint MATRIX™

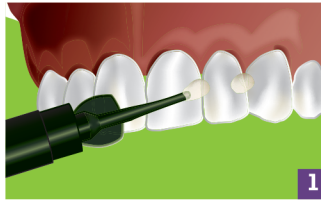


TUTORIAL- Implementation procedure

Teeth can be stabilized before installing the splint either with a drop of composite or by using a silicone key molded on the vestibular surfaces.

To create a splint on teeth

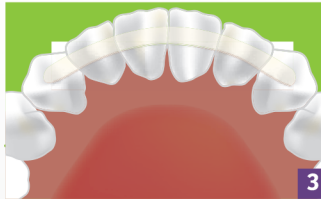
13-23, first de-scale and polish the teeth meticulously and then clean the gaps between the teeth using an abrasive strip.



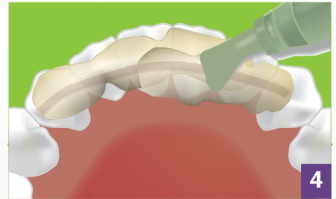
1- Remove the protective strip from the SplintWax Clinique adhesive wax. Dry the dental surfaces and position the SplintWax Clinique wax strip in the site of the future splint. Remove excess wax using a scalpel.



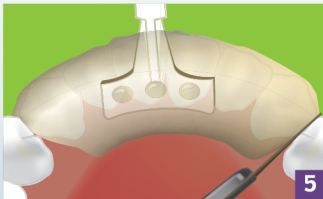
2- Record the position of the wax using transparent silicone.



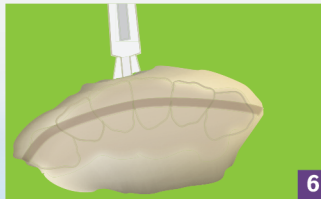
3- Place the tip of the Matrix Tip on the silicone key. Cover with more silicone and leave to harden. Remove the excess silicone from the upper part.



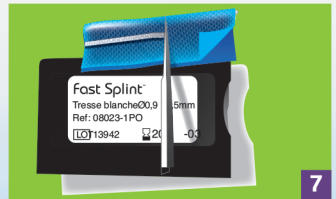
4- Remove the excess silicone from the sides. You should be able to insert the key without slipping.



5- Take out the silicone key and set aside. Check that the wax imprint is clear on the intrados.

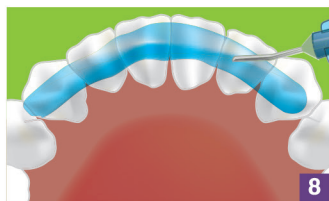


6- Etch the surface receiving the splint. Etch the vestibular surface and the gaps between the teeth. Rinse and dry.



7- Remove the wax strip from the silicone key and place on the packaging of the Perio & Ortho TL braided rope. Cut the rope to the length of the wax, in the direction of opening.

Fast Splint **MATRIX**TM



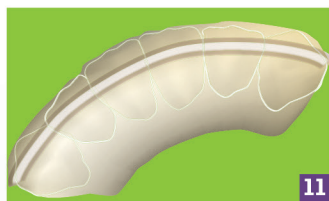
8- Apply a film of composite adhesive in the negative imprint left by the wax strip.



9- Lay out the FastSplint braided rope in the serration.



10- Apply the bonding agent on the palatine surface of the teeth.



11- Apply a drop of composite to the vestibular surface to stabilize the teeth. Photo-polymerize.



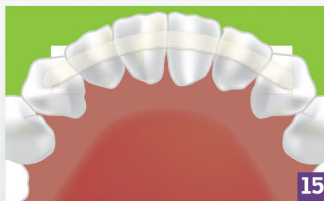
12- Apply the adhesive to surface of the teeth.



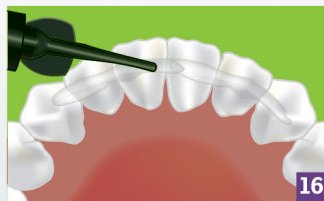
13- Press the silicone into place using the Matrix tip.



14- Polymerize in a single operation using a hand lamp for 40 seconds, then remove the silicone matrix.



15- The splint remains compacted and stuck to the dental surfaces.



16- Apply a very thin layer of composite adhesive and photo-polymerize. Polish using a yellow ring composite mill.

Medical device for dental treatment, reserved for healthcare professionals. Please read the instructions of the leaflet or on the label carefully before use. Class: IIA (CE marking certified by SGS) CE 1639.



BIO COMPOSANTS MÉDICAUX

215, route de Bavonne - ZA le Talamud
38140 Saint-Blaise-du-Buis
+33 (0)4 76 07 79 57

dentalbcm.com
contact@dentalbcm.com