

**TUTORIAL – Temporary adhesive bridge** – This tutorial is a graphic aid which does not in any way replace the instructions of the Fast Splint<sup>TM</sup> Clinique user manual.



**1 -** Edentulous space following extraction.



**2 -** Fit an acrylic tooth or the patient's tooth.



**3 -** Attach in the edentulous space using SplintWax<sup>TM</sup> Clinique wax strip.



**4 -** Record the position with the translucent silicone.



**5 -** Remove the wax strip and negative impression in the interior of the arch and the groove.



**6 -** The SplintWax<sup>TM</sup> Clinique wax strip adheres to the tooth. Keep this; it will provide the exact length of the braid required for fitting.



**7 -** Enamel etching.



**8 -** Etching the interproximal spaces.



**9 -** Cutting through the protective film of the Péro&Ortho T1 braid, the length of the SplintWax<sup>TM</sup> Clinique wax strip.



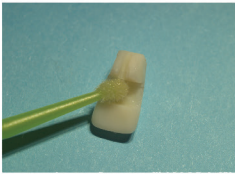
**10 -** Application of flowable composite in the negative groove of the silicone. Store the matrix away from the light.



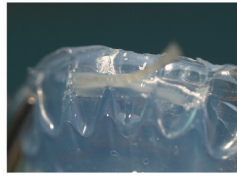
**11 -** Application of adhesive on the etched surfaces.



**12 -** Application of adhesive in the interproximal spaces.



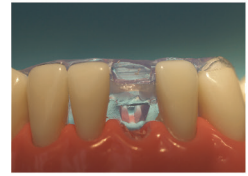
**13** - Application of adhesive in the retentive section of the acrylic tooth. Store away from the light.



**14** - Lay the Perio&Ortho T1 braid in the bed of the impression.



**15** - Application of flowable composite.



**16** - Application of the silicone matrix, fitted with the braid, onto the teeth.



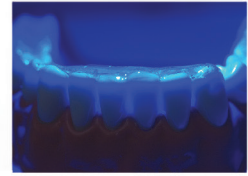
**17** - Addition of flowable composite to the vestibular surface.



**18** - Addition of flowable composite in the retentive groove of the acrylic tooth.



**19** - Firm assembly of the matrix onto the teeth



**20** - Bulk polymerisation using a powerful hand lamp.



**21** - Compact into a ribbon on the dental surfaces and in the retentive groove.



**22** - Addition of flowable composite to put the finishing touch to the surface.



**23** - Polish with a diamond bur for composite resins and polishing cups.



**24** - View of the finished bridge.

Medical device for dental care reserved for health professionals, not reimbursed by the Social Security. Always read carefully the instructions given in the manual or on the label before use. Class IIA (CE marking issued by SGS) CE1639.



**BIO COMPOSANTS MÉDICAUX**  
215, route de Bavonne - ZA le Talamud  
38140 Saint-Blaise-du-Buis  
+33 (0)4 76 07 79 57

**dentalbcm.com**  
contact@biomedicaux.com