



Fast Splint MATRIX™

Implementation procedure for Traumatology
Urgency's



EPOXY
BIS GMA
FREE

BIO COMPOSANTS
MÉDICAUX

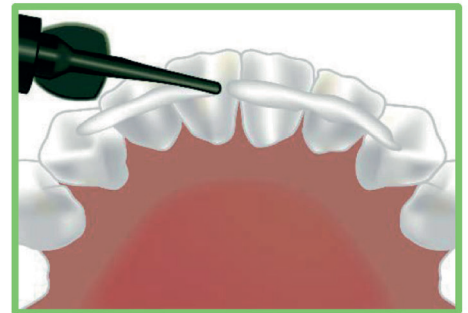
1- Prep the surface of the splint:

- Clean and polish the surface of the teeth meticulously
- Clean the gaps between each tooth that will be accommodating the splint.
- Dry



2- Etch and bond the facial surface of each tooth where the splint will be needed. Rinse and dry.

3- Place the natural tooth or provisional tooth.



4- Apply the bonding agent on the facial and light cure.

5- If needed, stabilize the lingual surfaces of the teeth to be splinted for better stability. Use a flow.



BIO COMPOSANTS MÉDICAUX
215, route de Bayonne - ZA le Talamud
38140 Saint-Blaise-du-Buis
+33 (0)4 76 07 79 57

dentalbcm.com
contact@biomedicaux.com



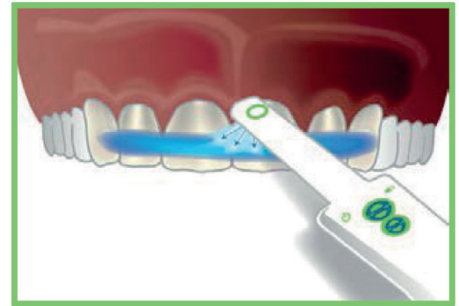
6- Cut the length of the braid through the blue plastic wrapper in the direction of opening. (This prevents the braid from fraying apart and permits a clean cut).



7-Add flow on the facial surface of the teeth and with the help of tweezers place the “Perio & Ortho” braid where the splint is needed.



8- Apply a thin layer of flow composite to smooth out the surface of the braid.



9- Light cure.



10- If needed, polish the surface of the splint using a polishing burr.

Medical device for dental treatment, reserved for healthcare professionals. Please read the instructions on the leaflet or on the label carefully before use. Class: IIA (CE marking certified by SGS) CE1639

